



December 2015

Vol. 17 No. 12

<http://www.tgcfernsociety.org>

**Holiday Party: Sunday, December 13, at 1:00 p. m. – Donna and Monty McGraw's Home,
22026 Glenmont Estates Blvd., Magnolia, TX 77355 - Phone: (281) 376-2923 or (281) 795-5986**

A message from our President:

Hi Everyone,

Hope you are all doing well and that you and your plants are staying warm. We had our first freeze up here on the north side last week. All the ferns seemed to survive but I can't say the same for our vegetable garden. It looks pretty pitiful now. Oh well, the seed catalog just arrived in the mail so time to start planning for spring.

I hope you all enjoyed the presentation on ferns of Peru by Blanca Leon last month. It is amazing the different environments and thus ferns within such short distances. Thank you to Blanca for such an interesting and informative program.

December is our time to get together for our Holiday Party. Donna and Monty McGraw have graciously offered to host our party this year at their amazing house, so don't miss it. Directions are included at the end of the newsletter. Remember it is one week early on December 13th at 1 PM. If you have not signed up for a dish, please contact Faye Stansberry or Terri Dolney to let them know what you plan to bring. The current signup list is included with the newsletter. We will have a fern/plant related gift exchange in the \$15-\$20 range if you'd like to participate. Please bring your gift wrapped if you can so it will be a surprise. Remember your spouse, significant other, or friend is welcome to come with you. Hope to see you there.

I want to thank all of you for your participation and hard work over this past year, especially the officers, board members, and committee chairs. We've had a good year with many new members joining our society. I'd like to welcome all of you again and I encourage you to get involved because it takes all of us to make our society strong.

We have had some terrific speakers and programs this year including a great field trip lead by Dr. Carl

Taylor and his wife Jerry to the Big Thicket thanks to our VP Darla Harris. She's also been busy working with the 2016 VPs on next year and it is looking like another exciting year. Thanks for all your help over this past year.

I'd like to also thank all of you who have donated plants to our raffles and those who bought tickets for a chance to win some new plants. We've had some really great raffles. It is a good way of sharing plants as well as picking up new ones to try. It is also a nice fund raiser for our society to help pay for our projects.

And last I would like to thank all of you who have brought refreshments this year. I have been very impressed. We have some very generous members. Thank you all.

As we move into 2016, I know we will have a strong year with Darla Harris leading us. She has many years of experience as president of our society and has a vast knowledge of ferns to share. I know I am looking forward to an exciting year.

Thank you for all the help over this past year and I hope to see you soon.

Cherie



Please Welcome Our New Members:

Jane Lackow

and

Linda & Jim Migliavacca



2015 Officers and Committees:

President:	Cherie Lee
Vice President:	Darla Harris
Secretary:	Diane Hudnall
Treasurer:	Mary McConnell
Board Members-at-Large:	Patrick Hudnall Larry Rucker
Education Chair:	Darla Harris
Hospitality Chair:	Terri Dolney and Faye Stansberry
Library:	Frank Lee
Membership Co-chairs:	Beth Ayer and Marcia Livingston
Newsletter:	Cherie Lee
Spore Exchange:	Patrick Hudnall
Ways and Means:	Larry Rucker
- Raffle, Store, etc.	
Web Master:	Malcolm McCorquodale
Welcoming at Door:	Beth Ayer and Marcia Livingston



2016 Dues

2016 dues are now being accepted. Please review the 2015 directory for any updates to your information, complete the membership form, and return it with your payment and any changes noted to our Membership Co-chairs Beth Ayer and Marcia Livingston at our next meeting or mail it to:

Beth Ayer
5815 Portal Drive
Houston, TX 77096

TGCFS dues amounts:

Individual:	\$10.00
Family:	\$15.00
Student:	\$ 5.00

Please make your checks payable to Texas Gulf Coast Fern Society or simply TGCFS.



Reminder

Please submit any receipts for reimbursement to Treasurer Mary McConnell before the end of the year so she can balance the Society's books. Thanks.



Up and Coming Attractions:

Dec 13: Holiday Party
at Donna and Monty McGraw's home

2016:

Jan: "From Spore to Staghorn Fern in 6 Months"
by Patrick Hudnall (hands on)

Feb: "Mounting Aglaomorpha coronans"
by Larry Rucker (hands on, \$15 per membership / \$20 non-members)

Mar: TBD

Apr: Field Trip "Peckerwood Gardens"
20571 FM 359, Hempstead, TX 77445

May: "Ferns of Mexico Systematics"
by Alejandra Vasco

June: TBD

July: TBD

Aug: Summer Party
at Biruta Claunch's home

Sept: Annual Plant Swap

Oct: TBD

Nov: "Fern Holiday Ornaments"
by Larry Rucker (hands on, cost TBD)

Dec: Holiday Party
at Larry Rucker's home

Submitted by: Darla Harris, Vice President and
2016 VPs Lisa George & Larry Rucker



November Raffle Results:

Thank you to our Donors: Beth Ayer, Bret & Raini Cunningham, Pat Hudnall, Cherie Lee, Donna McGraw, Jere Noerager, Larry Rucker, and Cecil Strange

Congratulations to the Winners: Beth Ayer, Martha Burg, Raini Cunningham, Darla Harris, Anna Belle Hicks, Cherie Lee, Ruth McDonald, Donna McGraw, Jere Noerager, Fred Robinson, and Donna Williams



Refreshments:

Refreshments for November were generously furnished by:

Drinks: Rodolfo Reyes, Cecil Strange
Savory: Mary McConnell, Ruth McDonald,
Faye Stansberry, Larry Rucker, and
Beth Whitley
Desserts: Beth Ayer, Biruta Claunch, and
Bret & Raini Cunningham
Service ware: Cherie Lee

December will be our Holiday Party. Faye Stansberry and Terri Dolney are organizing the feast so please let them know what delectable dish you plan to bring.

Also, please let them know if you can help with the refreshments for any months in 2016. Email to Faye at stansberry.faye@yahoo.com or call 713-734-0170 or email to Terri at maidenofthesea@hal-pc.org or call 713-592-9029. Come out and enjoy some really delicious food!



December Book Review

“Indoor Ferns” by Boy Altman

This book explains in great detail the correct treatment for ferns: light, water, temperature, fertilizer, repotting – all aspects of caring for the plants are discussed in simple language, and with no complicated scientific terminology. In addition, each variety (about ninety of them are available) is discussed separately in summary form. It tells you how to keep tropical and sub-tropical ferns growing in peak condition and is lavishly illustrated with over 150 color photographs.

This book is intended for every fern lover and there will no longer be any excuse for letting an indoor fern die after only a few months. Every room in the house can be home to some of the many splendid varieties of ferns.

Submitted by: Frank Lee



Texas Gulf Coast Fern Society General Meeting – November 15, 2015

The general meeting was held at the Judson Robinson Jr. Community Center, Houston, Texas. The meeting was called to order at 2:00 pm by President Cherie Lee.

General: Cherie opened the meeting by thanking the people who brought food and refreshments and asked people to sign up for the next few months. She then discussed the Holiday Party to be held at Donna and Monty McGraw’s home on the second Sunday of December at 1 pm, one hour earlier than the regular meeting. Map and directions will be posted in the December newsletter. Sign up for the Holiday party pot luck items was circulated. Anyone who wishes to participate in the gift exchange at the Holiday party, please bring a wrapped item valued in the \$15 - \$20 range.

Membership chair Beth Ayer announced that a 2015 directory addition including information on new members since the directory was published is available. The 2016 directory is due out in April. A reminder was mentioned on paying 2016 dues. So far 29% of the members have paid for next year.

Diane Hudnall and Lisa George were thanked for their assistance with the microscopes and computer projection for the October program.

Beth Ayer, Chairman of the Nominating Committee, was asked to give their nominations for 2016 officers. The following were nominated:

President: Darla Harris
Vice President: Lisa George with assistance from
Larry Rucker (working together)
Secretary: Diane Hudnall
Treasurer: Mary McConnell
Board at Large: Biruta Claunch and Terri Dolney

Martha Burg made the motion that these nominees be accepted. Jere Noerager seconded the motion. A show of hands was asked and the motion was approved.

Darla talked about the upcoming meetings next year.

Cecil brought in his terrarium to show how well his is doing.

Frank called attention to the library and that books were available for checkout, to be returned the following meeting.

Program: Blanca Leon presented: A prospective on ferns from dry environments in Peru.

Attendance: 28 members and 1 visitor were present. There were 3 new members this month – Jane Lackow, Jim and Linda Migliavacca.

Raffle: \$60.00 was raised

Submitted by: Diane J. Hudnall, secretary



Polystichum acrostichoides

Family: [Dryopteridaceae](#)

Genus: [Polystichum](#) pol-IS-tick-um

Species: [acrostichoides](#) ak-ruh-stik-OH-id-eez

Native to North America, this beautiful fern meanders its way throughout the forest and wooded areas of several eastern states including eastern Texas, growing from zone 3 to 9. We were fortunate to see this fern (aka. Christmas fern) while on our field trip to the Big Thicket earlier this spring.

This clumping fern will produce a rhizome that reaches out to produce a new plant to walk its way through the forest floor, with fronds reaching heights of 1-2 feet with the spread of 1-2 feet. The evergreen splash this fern adds to a winter landscape is in part how it got its common name. Growing with erect fronds until that first frost then drooping down to lay in a flat spray of green on the ground until the new fronds push up in the spring. You can cut the old fronds off if you would like, but they don't have to be trimmed as they provide erosion protection by keeping the tree leaf debris from washing away in a heavy rain. This also helps with the natural nurturance that keeps the plant healthy. When planting, space ferns at least 18" apart.

The Christmas fern is an easy fern to grow provided you give it shade to partial shade and a well mulched setting. This fern can be very drought tolerant once it's established, but never likes to be soggy, moist yes, but well drained. When you plant it, be sure to mulch about 4" around the base of the fern to help retain the moist conditions it likes.

The fronds are arching and about 4" at the widest point in the middle of the frond. It is the epitome of our thoughts on what a forest fern looks like. The pinnae (the actual leaflets) on the frond could have been the reason for its common name as well since they resemble a winter sleigh or even a stocking with their J shape.

The third possible reason for its common name is how it brightens up and decorates the home during the winter season if brought inside as a houseplant. To keep as a houseplant, pot in a well drained medium and place in an east facing window.

This fern is a wonderful addition to your garden. It is relatively deer resistant and it provides a protective, concealing habitat for ground-feeding and ground-nesting birds. The root system helps with stabilizing the ground and reducing erosion. It adapts well to most growing conditions and is resistant to most pests and diseases. Planting with winter/spring bulbs will add a floral vase display in your back yard.

This is a win, win fern! Do give it a try if you aren't already growing this one.



Submitted by: Darla Harris



Library

We encourage you to take advantage of the great resource of information available in our library. At each meeting there are a wide variety of books available for immediate checkout. Don't forget to visit our web site (see link in header, page 1) and click on **Library** to see the current list of books available. There you will see some pictures of the books we have and links to reviews at Amazon and elsewhere. If there is a particular book you would like to check out at the meeting, please contact Frank Lee at f.a.lee@sbcglobal.net or 832-566-5788 prior to the meeting to make sure it will be available.



Editor's Comments:

Deadline for the January Newsletter is December 30, 2015. Thanks.

Cherie Lee, Editor, *TGCFS Newsletter*



Upcoming Events in the Houston Area:

If you have the time and would like to expand your horticultural activities, take note of the following announcements.

The Houston Orchid Society, Inc.

www.houstonorchidsociety.org

Regular meetings are held the first Thursday of every month at 7:30 PM at the First Christian Church,
1601 Sunset Blvd., Houston, TX 77005

Next regular meeting is:
January 7, 2016

Bromeliad Society/Houston Inc.

www.bromeliadsocietyhouston.org

Regular meetings are held the third Tuesday of every month at 7:30 PM at the West Gray Multi-Service Center
1475 W. Gray St., Houston, TX 77019

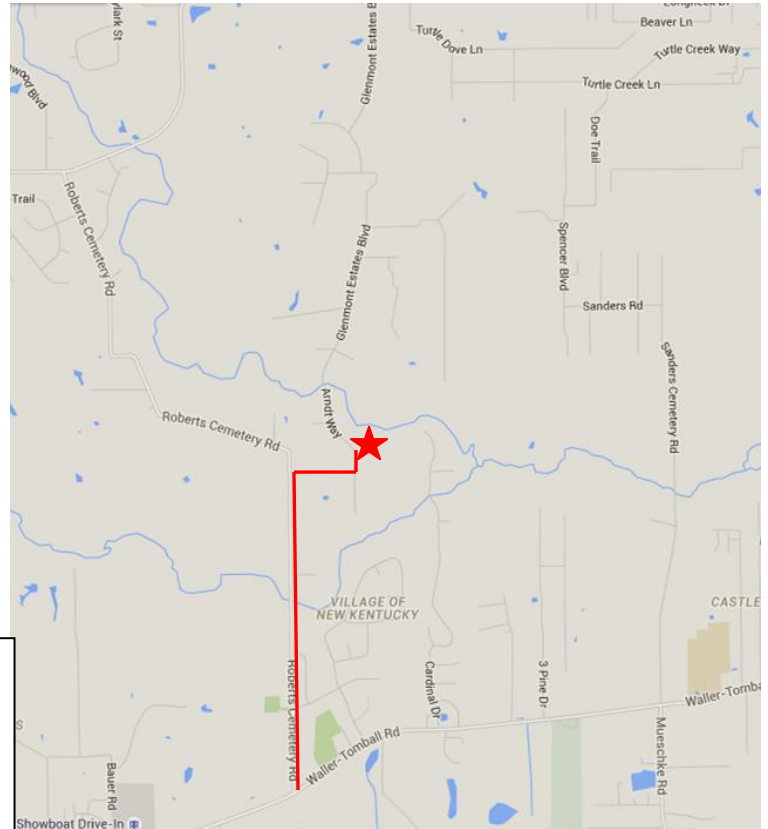
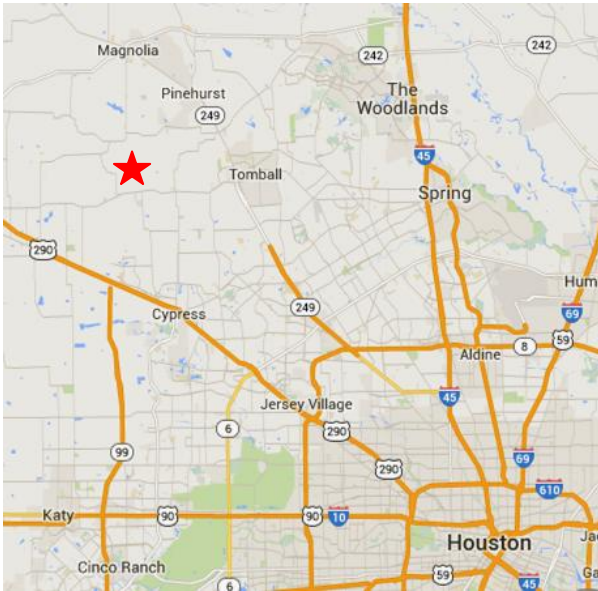
Next regular meeting is:
January 19, 2016

“Coastal Ferns of Peru – Xeric Environment” presented by Blanca Leon



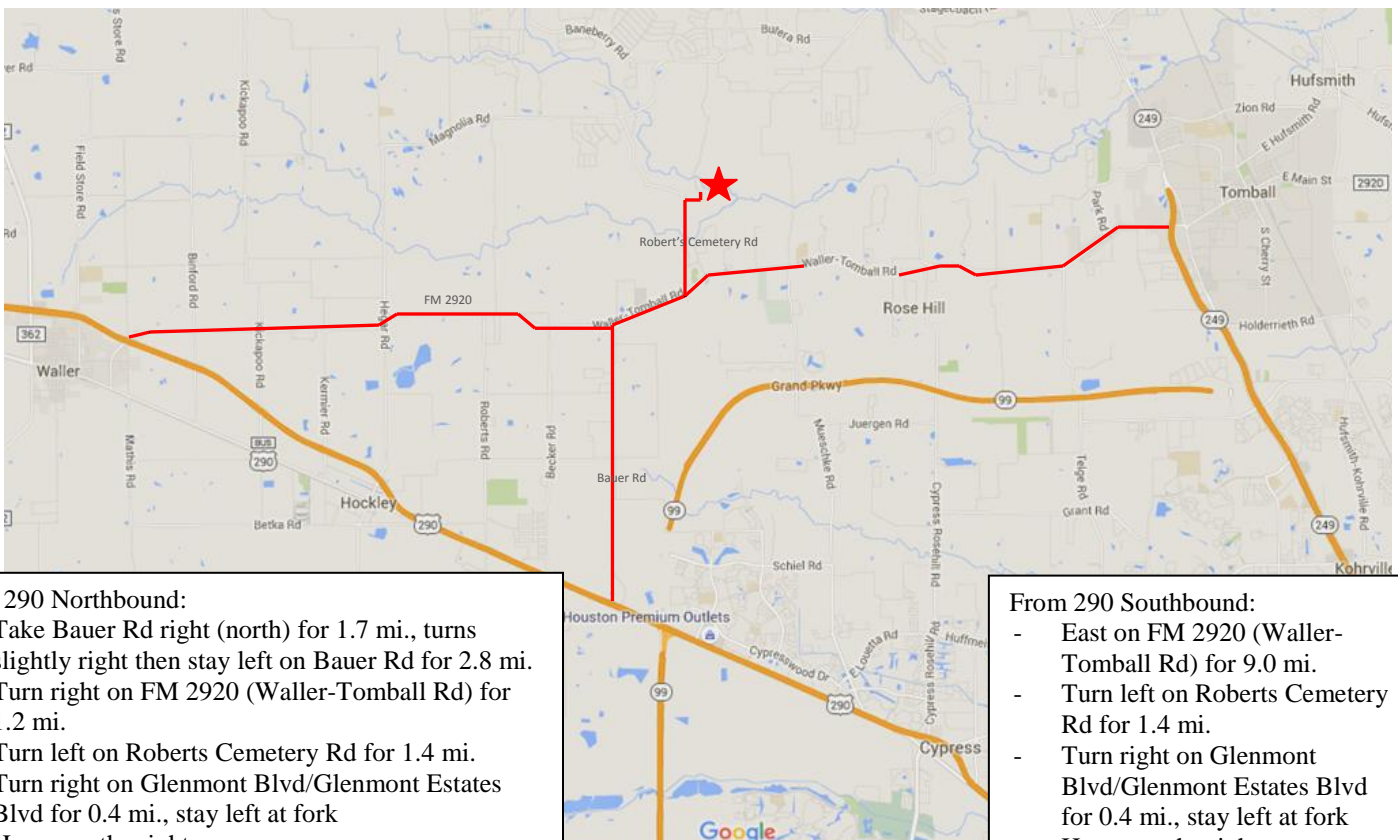
Raffle Plants

Holiday Party – December 13th at 1 PM
Donna and Monty McGraw's Home
22026 Glenmont Estates Blvd., Magnolia, TX 77355
Phone: (281) 376-2923 or (281) 795-5986



From Tomball (249):

- West on FM 2920 (Waller-Tomball Rd) for 8.2 mi.
- Turn right on Roberts Cemetery Rd for 1.4 mi.
- Turn right on Glenmont Blvd/Glenmont Estates Blvd for 0.4 mi., stay left at fork
- House on the right



From 290 Northbound:

- Take Bauer Rd right (north) for 1.7 mi., turns slightly right then stay left on Bauer Rd for 2.8 mi.
- Turn right on FM 2920 (Waller-Tomball Rd) for 1.2 mi.
- Turn left on Roberts Cemetery Rd for 1.4 mi.
- Turn right on Glenmont Blvd/Glenmont Estates Blvd for 0.4 mi., stay left at fork
- House on the right

From 290 Southbound:

- East on FM 2920 (Waller-Tomball Rd) for 9.0 mi.
- Turn left on Roberts Cemetery Rd for 1.4 mi.
- Turn right on Glenmont Blvd/Glenmont Estates Blvd for 0.4 mi., stay left at fork
- House on the right